

# Forgot password



If you forget your myRECA password, select the Forgot password link next to the password field.

**myRECA Log In**

username

[forgot username](#)

password

[forgot password](#)

Passwords must be at least eight characters long, with one number, one upper and one lower

Log In

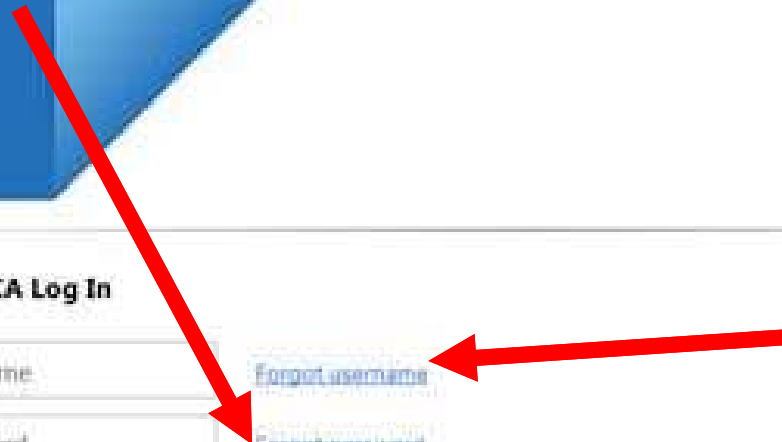
**New myRECA Users**

If you do not have a username click "Create an Account".

[Create an Account](#)

Former industry professionals who never created a myRECA account, you need to "Onboard" by clicking below.

If you forget your username you can click here



Enter your myRECA username and the email address on file in myRECA.

myRECA

Protecting consumers by setting and enforcing licensi standards.

### Forgot Password

Enter myRECA username:

[Forgot Username](#)

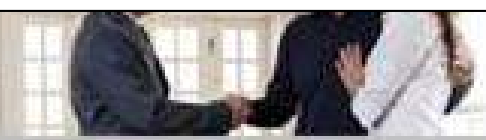
Enter myRECA E-Mail Address:

[Submit](#)



Answer your security question. If you get the answer wrong you can try again.

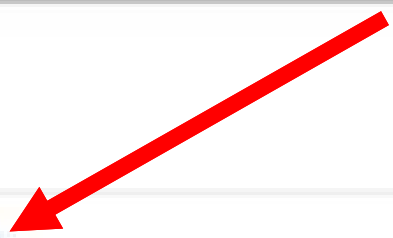
nyRECA



standards.

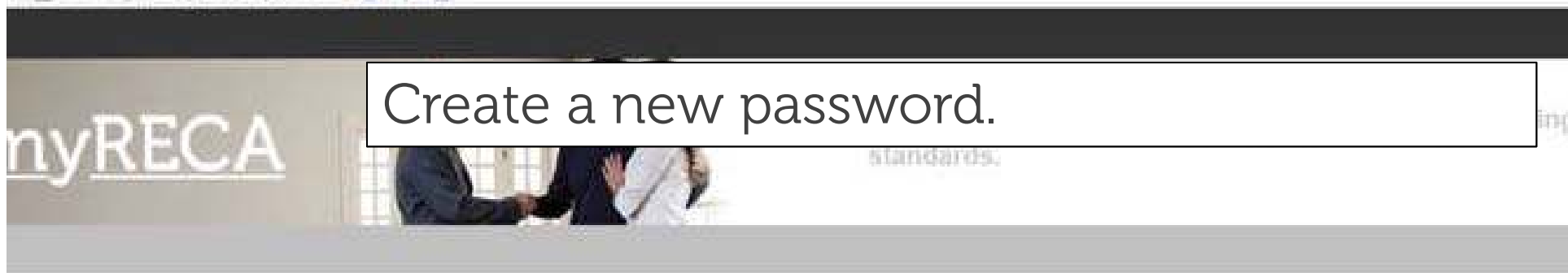
### Forgot Password

What is the name of your favourite childhood friend?



Verify

Create a new password.



### Change Password

Enter a new password. When you press Save you will be returned to the login screen.

Password:

Confirm Password:

